

Lenovo recommends Windows Vista® Business.

THINKPAD X61/X61s:

COULD IT BE ANY MORE ULTRA?

ULTRA PORTABLE:

- Less than 20mm (0.8") thin<sup>1</sup>
- Weight starts at 1.24kg (2.73 lb)<sup>2</sup>

ULTRA CAPABLE:

- Intel® Centrino® Pro processor technology<sup>3</sup>
- Up to 12.5 hours of battery life<sup>4</sup>

ULTRA PROTECTED:

- Magnesium-alloy top and bottom covers
- Shock-mounted hard drive with Active Protection System™



**lenovo**

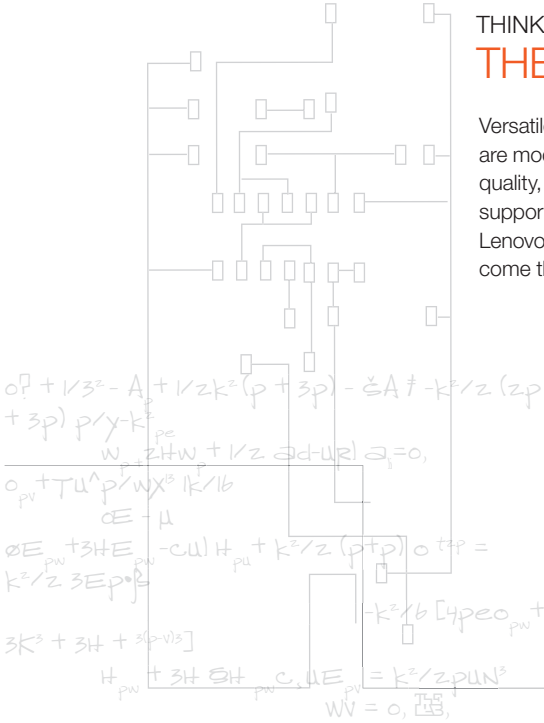
NEW WORLD. NEW THINKING.™

Lenovo recommends Windows Vista® Business.

THINKPAD X61/X61s:

## THE WORLD'S BEST ENGINEERING IN ACTION.





Versatile, expandable and able to go up to 12.5 hours unplugged, ThinkPad® X61 and X61s notebooks are models of extreme mobility. Engineered to be extremely thin and ultralight—without compromising quality, durability or performance. Equally impressive is worldwide, round-the-clock service and support and an industry-leading warranty\*. ThinkPad X61 and X61s notebooks are products of Lenovo, a global company incorporating the former IBM PC division. From the world's best engineers come the world's best-engineered PCs.



ThinkPad X61 and X61s notebooks are the most secure X Series models ever. Client Security Solution, a Trusted Platform Module, 32-byte hard-drive passwords and the ability to disable ports on the BIOS level ensure data is protected from top to bottom.

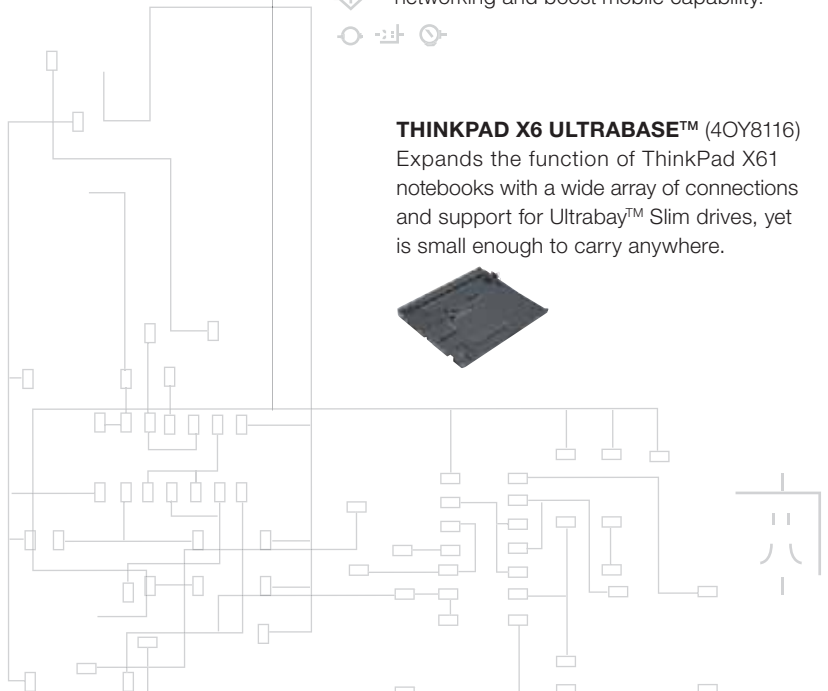
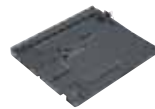


ThinkPad X61s models with optional UltraLight screen start at only 1.24kg (2.73 lb), and use low-voltage processors for longer battery life while maintaining full X Series functionality.

-  ThinkVantage® Access Connections™ and UltraConnect™ II antennae simplify wireless networking and boost mobile capability.
- 
- 
- 

### THINKPAD X6 ULTRABASE™ (40Y8116)

Expands the function of ThinkPad X61 notebooks with a wide array of connections and support for Ultrabay™ Slim drives, yet is small enough to carry anywhere.



# Lenovo recommends Windows Vista® Business.

## □ THINKPAD X61 NOTEBOOK SPECIFICATIONS

### Processor (speed, L2 cache, FSB)

Intel® Core™ 2 Duo T7300 (2.0GHz, 4MB, 800MHz)  
Intel Core 2 Duo T7100 (1.83GHz, 2MB, 667MHz)

### Preloaded operating system<sup>6</sup>

Genuine Windows Vista™ Ultimate  
Genuine Windows Vista Business 32  
Genuine Windows Vista Business 64  
Genuine Windows Vista Home Basic 32  
Genuine Windows XP Professional

### Display/resolution

12.1" XGA (1024x768, 150nit)

### Serial ATA Hard Drive<sup>7</sup>

60, 80, 120, 160GB 5400rpm  
60, 100GB 7200rpm

### Memory<sup>8</sup>

Up to 4GB PC2-5300/667MHz (3GB addressable with 32-bit OS)

### Optical drive

DVD-ROM, CD-RW/DVD Combo, or Multi-Burner Plus  
DVD Dual Layer Recordable (ThinkPad X6 UltraBase™ required)

### Video graphics

Intel Graphics Media Accelerator X3100 (up to 256MB)

### Available Integrated communications

Modem; Gigabit Ethernet  
ThinkPad® 11a/b/g II<sup>9</sup>  
Intel® PRO/Wireless 3945ABG  
Intel Wireless WiFi Link 4965AG  
Intel Wireless WiFi Link 4965AGN  
Bluetooth™<sup>10</sup>  
Embedded WWAN

### Li-Ion battery life

4-cell cylindrical: up to 3.9hr  
8-cell cylindrical: up to 7.8hr

### With optional extended-life battery

Up to 10.7hr (standard 8-cell high capacity battery plus ThinkPad X60 Series Extended Life battery)

### Ports

3 USB 2.0, 1394; expansion bus (for optional ThinkPad X6 UltraBase or ThinkPad X60 Series Extended Life Battery); external display; AC adapter; RJ-11, RJ-45; audio: headphone/line-out, external microphone

### Slots

1 Type I / II PC Card slot with 34mm ExpressCard via adapter, 1 Secure Digital card slot

### ThinkVantage® Active Protection System™ and ThinkPad Shock-Mounted Hard Drive

Standard

### ThinkVantage Client Security Solution

Standard

### Integrated Fingerprint Reader

Select models

### Keyboard

Full-size<sup>11</sup>, ergonomic keyboard with palm rest, TrackPoint® pointing device with "Press-to-Select," Internet Scroll Bar, intuitive volume, ThinkVantage button and Windows® keys

### Dimensions

268 x 211 x 20–35mm (10.5 x 8.3 x .80–1.39")

### Weight

4-cell cylindrical: 1.41kg (3.11 lb)  
8-cell cylindrical: 1.63kg (3.56 lb)

### Port replicator/dock support

Optional ThinkPad X6 UltraBase

### Limited warranty

1yr or 3yr system/1yr battery

### Additional supported operating systems

Genuine Windows 2000

### Included software (preloaded)<sup>12</sup>

Adobe Reader  
Diskeeper Home  
Microsoft: Windows Live™ Toolbar & Search  
Google Picasa  
DVD playback codec  
PC-Doctor  
Norton Internet Security  
(with 90 days of virus definitions)  
ThinkPad Utilities  
(Power Manager and Presentation Director)  
ThinkVantage Access Connections™  
ThinkVantage Fingerprint Software  
ThinkVantage Productivity Center with Away Manager  
ThinkVantage Rescue and Recovery™  
ThinkVantage System Update

(downloadable)

ThinkVantage System Migration Assistant™

(license—CD not included)

IBM Lotus Notes® stand-alone client

### Certified operating systems

For a listing of completed Linux® certifications, visit [lenovo.com/linux](http://lenovo.com/linux)

## □ THINKPAD X61s NOTEBOOK SPECIFICATIONS

### Processor (speed, L2 cache, FSB)

Intel Core 2 Duo L7500 (1.6GHz, 4MB, 800MHz)  
Intel Core 2 Duo L7300 (1.4GHz, 4MB, 800MHz)

### Preloaded operating system

Genuine Windows Vista™ Ultimate  
Genuine Windows Vista Business 32  
Genuine Windows Vista Business 64  
Genuine Windows Vista Home Basic 32  
Genuine Windows XP Professional

### Display/resolution

12.1" XGA (1024x768, 150nit)  
12.1" UltraLight XGA (1024x768, 180nit)

### Serial ATA Hard Drive

60, 80, 120, 160GB 5400rpm  
60, 100GB 7200rpm

### Memory

Up to 4GB PC2-5300/667MHz (3GB addressable with 32-bit OS)

### Optical drive

DVD-ROM, CD-RW/DVD Combo, or Multi-Burner Plus  
DVD Dual Layer Recordable (ThinkPad X6 UltraBase required)

### Video graphics

Intel Graphics Media Accelerator X3100 (up to 256MB)

### Available Integrated communications

Modem; Gigabit Ethernet  
ThinkPad 11a/b/g II  
Intel PRO/Wireless 3945ABG  
Intel Wireless WiFi Link 4965AG  
Intel Wireless WiFi Link 4965AGN  
Bluetooth™  
Embedded WWAN

With 12.1" UltraLight XGA:

4-cell prismatic: up to 3.5hr  
4-cell cylindrical: up to 4.5hr  
8-cell cylindrical: up to 9hr

### With optional extended-life battery

With 12.1" XGA: up to 11.3hr  
With 12.1" UltraLight XGA: up to 12.5hr  
(Standard 8-cell high capacity battery plus ThinkPad X60 Series Extended Life battery)

### Ports

3 USB 2.0, 1394; expansion bus (for optional ThinkPad X6 UltraBase or ThinkPad X60 Series Extended Life Battery); external display; AC adapter; RJ-11, RJ-45; audio: headphone/line-out, external microphone

### Slots

1 Type I / II PC Card slot with 34mm ExpressCard via adapter, 1 Secure Digital card slot

### ThinkVantage Active Protection System and ThinkPad Shock-Mounted Hard Drive

Standard

### ThinkVantage Client Security Solution

Standard

### Integrated Fingerprint Reader

Select models

### Keyboard

Full-size, ergonomic keyboard with palm rest, TrackPoint pointing device with "Press-to-Select," Internet Scroll Bar, intuitive volume, ThinkVantage button and Windows keys

### Dimensions

268 x 211 x 20–28mm (10.5 x 8.3 x 0.8–1.1")

### Weight

With 12.1" XGA:  
4-cell prismatic: 1.32 kg (2.90 lb)  
4-cell cylindrical: 1.36 kg (3.00 lb)  
8-cell cylindrical: 1.58 kg (3.48 lb)

With 12.1" UltraLight XGA:

4-cell prismatic: 1.24 kg (2.73 lb)  
4-cell cylindrical: 1.28 kg (2.83 lb)  
8-cell cylindrical: 1.50 kg (3.30 lb)

### Port replicator/dock support

Optional ThinkPad X6 UltraBase

### Limited warranty

1yr or 3yr system/1yr battery

### Additional supported operating systems

Genuine Windows 2000

### Included software (preloaded)

Adobe Reader  
Diskeeper Home  
Microsoft: Windows Live Toolbar & Search  
Google Picasa  
DVD playback codec  
PC-Doctor  
Norton Internet Security  
(with 90 days of virus definitions)  
ThinkPad Utilities  
(Power Manager and Presentation Director)  
ThinkVantage Access Connections™  
ThinkVantage Fingerprint Software  
ThinkVantage Productivity Center with Away Manager  
ThinkVantage Rescue and Recovery  
ThinkVantage System Update

(downloadable)

ThinkVantage System Migration Assistant

(license—CD not included)

IBM Lotus Notes stand-alone client

### Certified operating systems

For a listing of completed Linux certifications, visit [lenovo.com/linux](http://lenovo.com/linux)

For important warranty information, see page 4.

Lenovo recommends Windows Vista® Business.

DESIGNED TO DO THE UNEXPECTED:  
**MAKE AN AMAZING PC  
EVEN BETTER.**

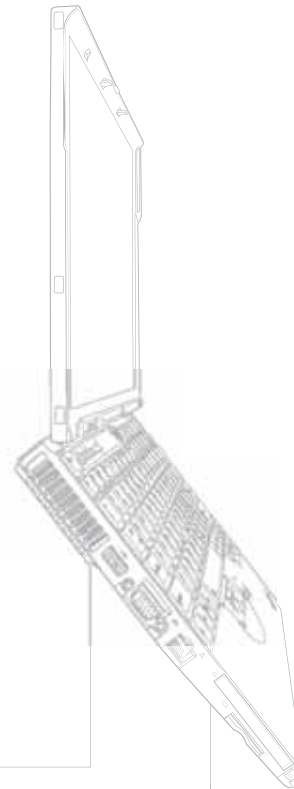
THINKPAD X61 NOTEBOOK ACCESSORIES:



**LENOVO USB HEADSET (40Y8518)**  
Works with the Lenovo USB Webcam (40Y8519)  
to deliver a fully engaged, Internet-based  
voice and video multimedia experience.



**LENOVO USB 2.0 SUPER MULTI-BURNER  
WITH LIGHT SCRIBE. (41N5565)**  
Reads and writes without an external power  
adapter when connected to a USB 2.0 port.



**1.866.426.1316**  
**lenovo.com**

**lenovo™**

© 2007 Lenovo. Produced in the USA, 6-07. All rights reserved. Availability: All offers subject to availability. Lenovo reserves the right to alter product offerings and specifications at any time without notice. Lenovo is not responsible for photographic or typographic errors. Warranty Information: For a copy of applicable product warranties, write to: Warranty Information, P.O. Box 12195, RTP, NC 27709, Attn: Dept. ZPYA/B676. Lenovo makes no representation or warranty regarding third-party products or services. **Footnotes: [1] Thinness:** may vary at certain points on the system. **[2] Weight:** includes battery and optional travel bezel instead of standard optical drive in Ultrabay drive, if applicable. Weight may vary due to vendor components, manufacturing process and options. **[3] Mobile processors:** Power management reduces processor speed when in battery mode. **[4] Battery:** These model numbers achieved Battery Rundown Time of at least the time shown during testing. A description of the testing is available at [lenovo.com/pc/ww/thinkpad/batterylife](http://lenovo.com/pc/ww/thinkpad/batterylife). **[5] Limited warranty:** Support unrelated to a warranty issue may be subject to additional charges. **[6] Operating system:** Level of support varies by operating system. Operating systems not preloaded on the system may not provide full feature functionality. Refer to [lenovo.com/pc/support](http://lenovo.com/pc/support) and enter your machine type and model number for more information. **[7] Hard disk drive:** GB=1,000,000,000 bytes. Accessible capacity is less; up to 4GB is service partition. **[8] Models with 4GB memory:** Total accessible memory will be less and will vary depending on the system configuration. Maximum capacity may require purchase of optional component. **[9] 11a, 11b and 11g wireless:** are based on IEEE 802.11a, 802.11b, and 802.11g respectively. The IEEE 802.11n specification has not been finalized and is currently in draft release. The Lenovo and ThinkPad 11a/b/g/n Wireless LAN Mini-PCI Express Adapters are based on the Draft Release, Version 1.0, of the IEEE 802.11n specification. An adapter with 11a/b, 11a/b/g, or 11a/b/g/n can communicate on any of its supported formats; the actual connection will be based on the access point to which it connects. **[10] The Bluetooth word mark and logos:** are owned by Bluetooth SIG, Inc. and any use of such marks by Lenovo is under license. **[11] Full-size keyboard:** As defined by ISO/IEC 15412. **[12] Included software:** may differ from its retail version (if available) and may not include user manuals or all program functionality. License agreements may apply. **The following are trademarks of Lenovo:** Lenovo, the Lenovo logo, Access Connections, Active Protection System, Rescue and Recovery, System Migration Assistant, ThinkPad, ThinkVantage, TrackPoint, UltraBase, Ultrabay and UltraConnect. IBM, the IBM logo, Lotus and Lotus Notes are registered trademarks of IBM and are used under license. Intel, Intel Core, Centrino, Intel Inside and the Intel Inside logo are trademarks of Intel Corporation. Microsoft Windows, Windows Live and Windows Vista are trademarks of Microsoft Corporation. Linux is a trademark of Linus Torvalds. Other company, product and service names may be trademarks or service marks of others.

Visit [lenovo.com/safecomputing](http://lenovo.com/safecomputing) periodically for the latest information on safe and effective computing.